

Anti-FSHR hIgG1 Antibody(9H11)

Product information

GM-50111AB-10	10 µg
GM-50111AB-100	100 µg
GM-50111AB-1000	1 mg

Antibody Information

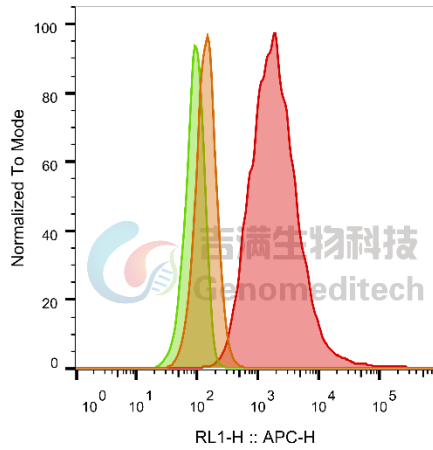
Species Reactivity	Human
Clone	9H11
Source/Isotype	Monoclonal human IgG1, κ
Application	Flow cytometry
Specificity	Detects FSHR
Gene	FSHR
Other Names	FSHR10, LGR1, ODG1
Gene ID	2492(human)
Background	<p>The follicle-stimulating hormone receptor or FSH receptor (FSHR) is a transmembrane receptor that interacts with the follicle-stimulating hormone (FSH) and represents a G protein-coupled receptor (GPCR). The follicle-stimulating hormone receptor (FSHR) is a multiplex transmembrane receptor that interacts with follicle stimulating hormone (FSH) and is expressed in prostate, ovary, thyroid, neuroendocrine pancreas, pituitary cancer cells and soft tissue sarcoma. FSHR is A member of the highly conserved class A G-protein-coupled receptor (GPCR) family. The follicle-stimulating hormone (FSH) is synthesized by anterior pituitary gonadotropin cells and acts through specific receptors (FSHR). In females, FSHR is expressed in granulosa cells, and it regulates Graafian follicle maturation, granulosa cell proliferation, and estrogen production. In males, FSHR is expressed in Sertoli cells of the testis, and it regulates its metabolic functions required for normal spermatogenesis and germ cell survival.</p>
Storage	Store at 2-8°C short term (1-2 weeks).Store at ≤ -20°C long term. Avoid repeated freeze-thaw.
Formulation	Phosphate-buffered solution, pH 7.2.
Endotoxin	< 1 EU/mg, determined by LAL gel clotting assay

Version:3.1 Revision Date:12/25/2023

Data Examples

Flow cytometry

The recommended usage range is 0.5-4 μg per test. H_FSHR Reporter CHO-K1 Cell Line (Catalog # GM-C25571) was stained with Anti-FSHR hlgG1 Antibody(9H11) (Catalog # GM-50111AB) or isotype control antibody, followed by anti-Human IgG APC-conjugated Secondary Antibody.



SampleID	Geometric Mean : RL1-H
CHO-K1 anti-H_FSHR+APC-2nd Ab	140
H_FSHR Reporter CHO-K1 H_IgG+APC-2nd Ab	91.6
H_FSHR Reporter CHO-K1 anti-FSHR+APC-2nd Ab	1884

Fig. FACS